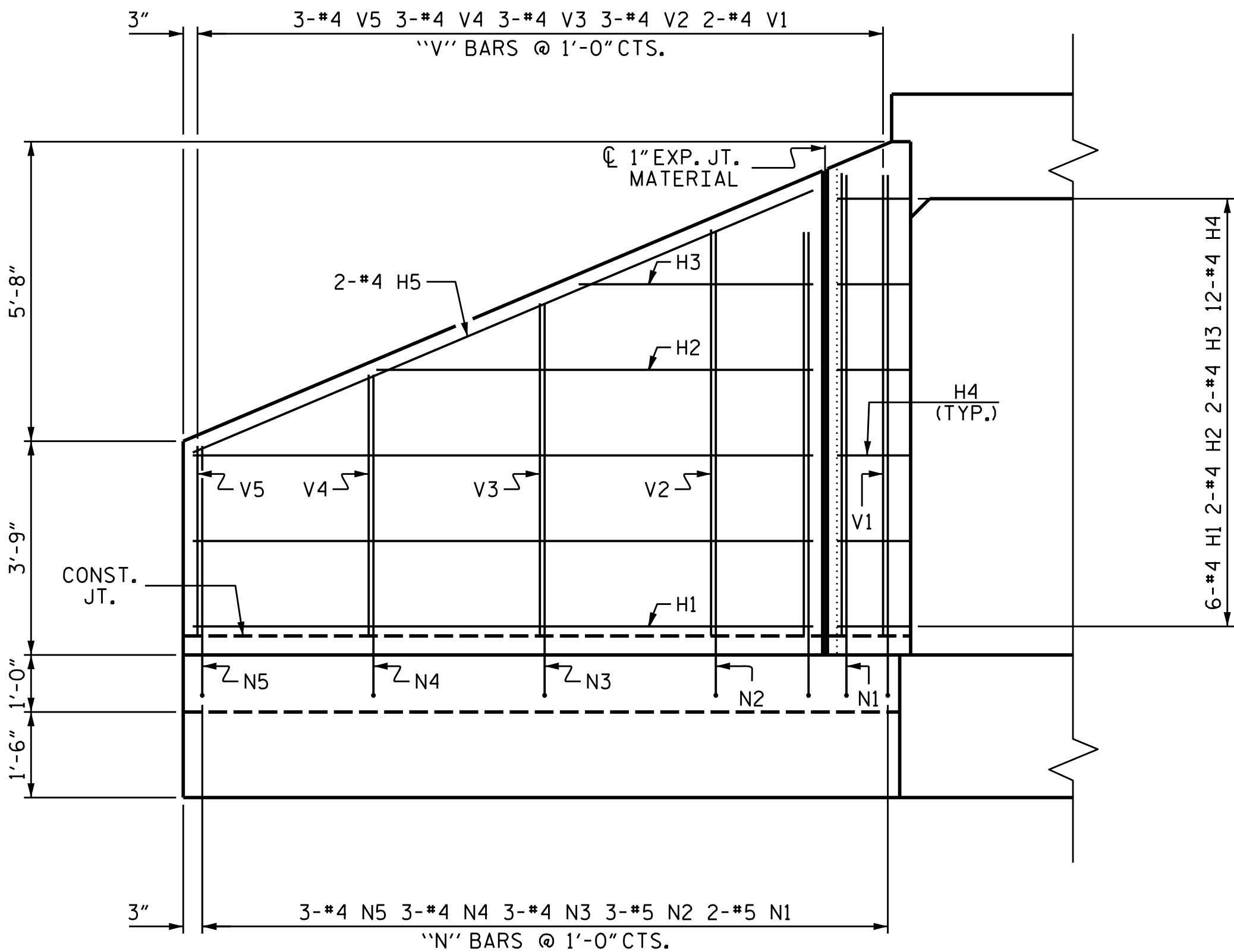
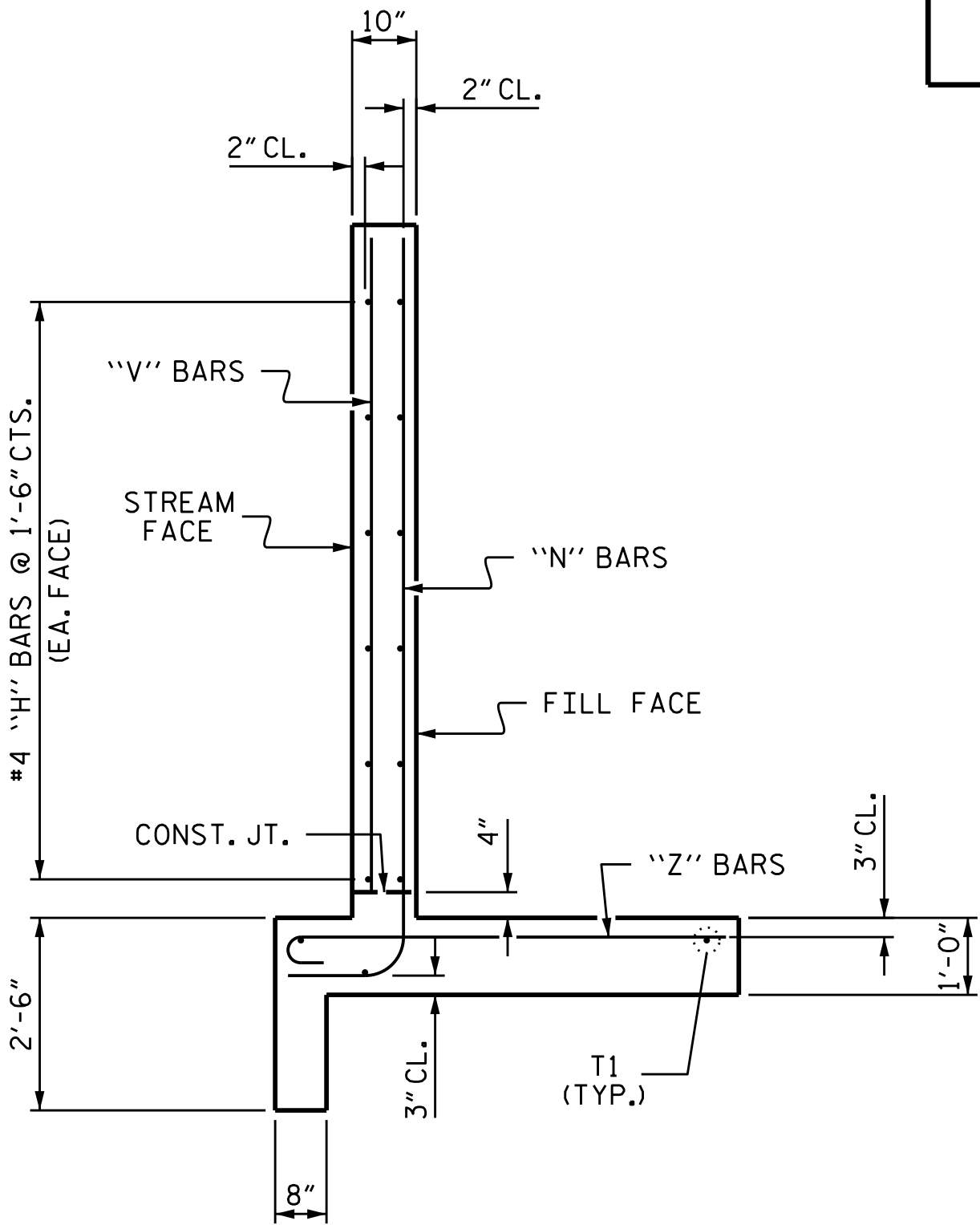


PLAN

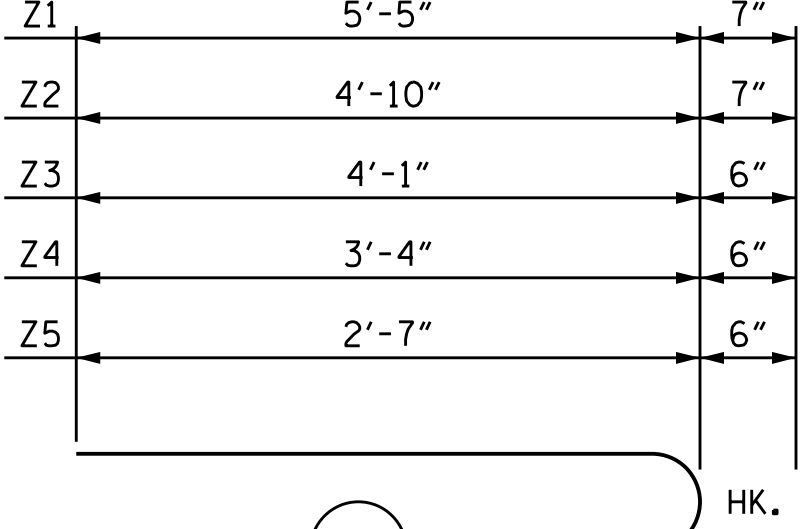
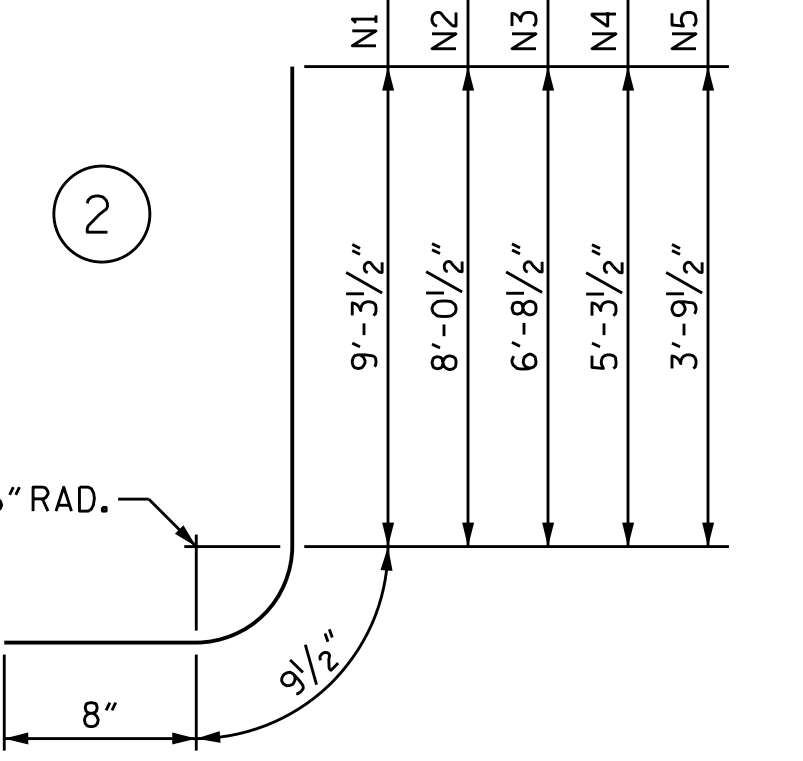
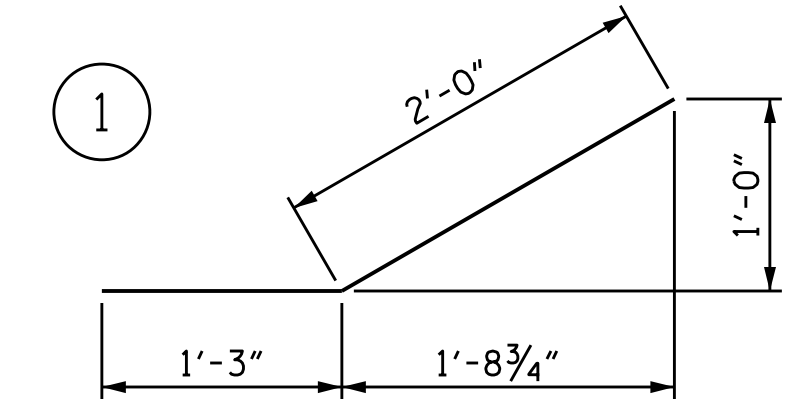


ELEVATION



TYPICAL WING SECTION

BAR TYPES



ALL BAR DIMENSIONS ARE OUT TO OUT.

BILL OF MATERIAL WING W1

BAR	NO.	SIZE	TYPE	LENGTH	WEIGHT
H1	6	#4	STR	10'-10"	43
H2	2	#4	STR	7'-8"	10
H3	2	#4	STR	4'-1"	5
H4	12	#4	1	3'-3"	26
H5	2	#4	STR	11'-9"	16
N1	2	#5	2	10'-9"	22
N2	3	#5	2	9'-6"	30
N3	3	#4	2	8'-2"	16
N4	3	#4	2	6'-9"	14
N5	3	#4	2	5'-3"	11
S1	3	#6	STR	6'-0"	27
T1	3	#5	STR	12'-9"	40
V1	2	#4	STR	8'-4"	11
V2	3	#4	STR	7'-1"	14
V3	3	#4	STR	5'-10"	12
V4	3	#4	STR	4'-7"	9
V5	3	#4	STR	3'-3"	7
Z1	2	#5	3	6'-0"	13
Z2	3	#5	3	5'-5"	17
Z3	3	#4	3	4'-7"	9
Z4	3	#4	3	3'-10"	8
Z5	3	#4	3	3'-1"	6

REINFORCING STEEL FOR WING W1				366	LBS
CLASS A CONCRETE					
1 WING				5.4	CY
1 HEADWALL				1.5	CY
1 END CURTAIN WALL				1.8	CY
TOTAL				8.7	CY

NOTES

A 3 FOOT STRIP OF FILTER FABRIC SHALL BE ATTACHED TO THE FILL FACE OF THE WING COVERING THE ENTIRE LENGTH OF THE EXPANSION JOINT.

G1 BARS IN HEADWALL ARE INCLUDED WITH THE BARREL REINFORCING STEEL.

PROJECT NO. HN-0031  
TRANSYLVANIA COUNTY  
STATION: 16+45.00 -L-

SHEET 6 OF 12



DOCUMENT NOT CONSIDERED FINAL  
UNLESS ALL SIGNATURES COMPLETED

TGS ENGINEERS  
201 W. MARION ST STE 200  
SHELBY, NC 28150  
PH (704) 476-0003  
CORP. LICENSE NO.: C-0275

STATE OF NORTH CAROLINA  
DEPARTMENT OF TRANSPORTATION  
RALEIGH

STANDARD WING W1  
FOR  
LEFT EXTENSION  
H = 8'-0" SLOPE = 2:1  
90° SKEW

REVISIONS						SHEET NO.
NO.	BY:	DATE:	NO.	BY:	DATE:	
1			3			C-6
2			4			TOTAL SHEETS 12

STD. NO. CW9008

ASSEMBLED BY :	ZCS	DATE :	1/26
CHECKED BY :	MGC	DATE :	2/26
DRAWN BY :	CCJ	10/99	REV. 6/19
CHECKED BY :	RWW	03/00	MAA/THC